

OFFICIALS:

Chief Commissaire: Dave Cockeram 1st week, Tom Greep 2nd & 3rd week

Assistant Com: Doreen Mallinson and Gary Burns

Chief Judge: Peter Jack

Assistant Judges: Doreen Mallinson, Jon Williams and Jon Taylor

Results: Anna Coates, Alex Reed

ORGANISER: KEN BECK, 18 Melrose Avenue, Southport PR9 9UY

To whom any complaints regarding these events should be made in writing within 48 hours of each event.

NOTES FOR RIDERS: Please ensure that you sign on before 9.15

Cycles will **NOT** be checked for road worthiness. This is **YOUR** responsibility.

Your cycle will only be checked to see if you have the correct gears. SEE TABLE BELOW.

DON'T FORGET YOUR HELMET

Youth Category Gear Restrictions

CATEGORY	ROAD RACING
YOUTH A	6.93 metres
YOUTH B	6.45 metres
YOUTH C	6.05 metres
YOUTH D	5.40 metres all events
YOUTH E	5.10 metres all events



GROUP D/E RIDE TOGETHER IN THE FIRST RACE AT 09-30 EACH DAY.
D-C-B-A&B GIRLS THEN A BOYS FOLLOW.

IF YOU DO NOT BRING YOUR LICENCE YOU WILL NOT BE ALLOWED TO RIDE.

On each Saturday every rider will ride two events;

POINTS WILL BE AWARDED FOR EACH EVENT, WITH AN OVERALL CLASSIFICATION FOR EACH GROUP AT THE END OF THE SERIES.

The judges reserve the right to move riders not suited to their starting Group

The overall leader receives the yellow jersey. The overall winner keeps the yellow jersey. If you retain the jersey you will not be awarded another.

D/E riders at 9.30am. others to follow on. Each rider has 2 races each day.

POINTS AWARDED THUS: 1st - 10 pts, 2nd - 8pts, 3rd - 7pts decreasing one point each place to ninth who has one point.

With the large numbers of youth riders now competing in events the Judges have to ensure the record keeping on every lap is completed without interruption to enable a correct result be issued.

Any questions/queries whilst racing is taking place should be directed in all instances to the Organiser, who will be standing only a maximum of 100 metres away from the starting area.

The Club would like to thank B.C. Officials:- Sefton Council, Terry Dolan, Phil Melville & Southport Flower Show for the use of their circuit, and any other persons who have helped to make the races a success and also Merseyside Cycling Development Group.

Full Timings and Prize list is on our website: www.southportcc.co.uk

Terry Dolan Cycles website: www.terrydolan.com

E-mail: kenbeck18@hotmail.co.uk

Prizes cannot be exchanged

PLEASE DIRECT ALL ENQUIRIES/COMPLAINTS TO THE ORGANISER NOT THE JUDGES

DO NOT PARK ON ROTTEN ROW AS IT IS ONLY 1HR IN ANY 2

SC SOUTHPORT CYCLING CLUB

JUVENILE CYCLE RACES

SAT MARCH 14nd 2015

SAT MARCH 21th 2015

SAT MARCH 28th 2015

9.30a.m. each day

Under British Cycling

Technical Regulations

Victoria Park, Southport

PR8 2BZ



Rotten Row Parking is 1 hour in any 2 hours and we have wardens

Free parking near wind turbine in the park



JONES & KEARNS

AUTOMOTIVE ENGINEERS

CRYPTON DIAGNOSIS
SPECIALISTS



Fuel Injection Systems, Servicing,
Car Radio Repairs, ABS Problems, Auto Electrical,
Ultrasonic Injector Cleaning, Rolling Road Tuning

ALISON & KEARNS

MOTS, Tyres,
Air Conditioning,
Wheel Alignment

77B PORTLAND STREET, SOUTHPORT 01704 537213

Mossdrop Cycles

78 Bispham Road, Southport, Tel: 01704 228805, www.mossdropcycles.net

FOR ALL YOUR CYCLING NEEDS

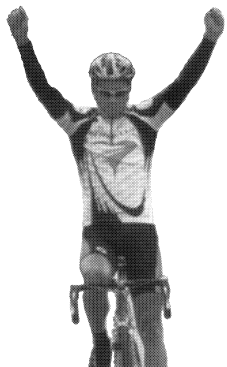
Over 100 bikes on display

Bikes from:

Ridgeback - Kinesis

Merida - Saracen

ROAD - MTB - BMX



CLOTHING, ACCESSORIES AND REPAIRS

Call in and see us at
Tastebuds Fettle's Wharf
Marina. All cyclists
welcome for snacks,
cakes, hot, and cold
drinks.



Cake Creations

by Ruth Davies

Wedding cakes • Corporate cakes • Birthday cakes, Christening cakes...



Telephone: 01704 541137 • www.cakecreation.co.uk • 16 Wesley Street, Southport, PR8 1BN

DOLAN

BUILT TO ORDER | UPGRADE OPTIONS | BIKE BUILD ONLINE

BIKE FITTING
DOLAN
SERVICE
NOW AVAILABLE

See Website For More Details

ARES SL

Campagnolo
CHORUS
11

Complete Bike Only **£2,849.99**
0% FINANCE AVAILABLE
MORE BUILD OPTIONS AVAILABLE ONLINE

ProCycling

"THE DESCENT CONFIRMED THAT YOU CAN REALLY TRUST THE ARES. IT LAPS UP FAST CORNERS, LATE BRAKING AND BIG LEAN ANGLES."

TUONO SL

SHIMANO
ULTEGRA
6800

Complete Bike Only **£1,999.99**
BIKE FINANCE FROM £7.33/WEEK
MORE BUILD OPTIONS AVAILABLE ONLINE

CYCLING GROUP TEST
WINNER

"EXCELLENT SPEC FOR THE MONEY CREATES A SUPER-LIGHT COMPLETE PACKAGE, WITH TIGHT AND WELL MANNERED HANDLING AND DECENT POWER RESPONSE"

AVAILABLE IN:

L'ÉTAPE

Campagnolo
VELOCE

Complete Bike Only **£799.99**
0% FINANCE AVAILABLE
MORE BUILD OPTIONS AVAILABLE ONLINE

**Please Note: Wheels Pictured are the Mavic Cosmic SLS which can be upgraded via our online bike builder for a reduced price of £549.99*

"IT'S COMFORTABLE, HANDLES BRILLIANTLY AND STOOD UP TO OVER 500 MILES IN FOUL WINTER WEATHER WITHOUT A HITCH."

93% CYCLING



SAVE UP TO 40%
More cycle schemes available online

Litherland Circuit League for 2015

Open to all Categories including Youth Elites, First Category and Second Category Riders

20 weeks of Wednesday night racing commencing on the 8th April 2015

at

Litherland Sports Park, Boundary Road, Litherland, L21 7NW.

Sponsored by highonbikes.com for the 2015 Season

www.highonbikes.com

General Enquiries concerning the League to Paul Patterson - 07954 316151

Overall Points to be awarded for each category including the Girls & Women

Completed Registration Forms and affiliation fees (cheques should be made payable to Litherland Circuit League) and sent to the League Treasurer, Paul Paterson, 50 Ennismore Road, Liverpool, L13 2AT prior to your first night's to avoid holdups at the signing on desk.

Registration Forms, Press Releases, Results and League Tables will be shown on the Merseyside Cycling Development Group website:



www.merseysidecyclingdevelopment.org/



DEAN HALSALL

GARDEN LANDSCAPES

Timeserved



Estimates
Free

WATER & ROCK GARDENS
PATIOS ♦ FENCING ♦ TURFING

TEL: 07773 907757

10 Handsworth Walk, Southport PR8 6XU



Coastline Foundation Engineering

Mini Piling And Brickwork Specialists

94 Shellfield Road, Southport,
Merseyside PR9 9UP
Tel: 01704 509032
Fax: 01704 212507



Top quality windows and conservatories

3 Slaidburn Crescent
Southport PR9 9YF
Tel: 01704 229471 Fax: 01704 231114



Tony Hornby
Property Management Services

SOUTHPORT'S PRINCIPAL RESIDENTIAL LETTING AGENCY

19 Houghton Street, Southport PR9 0NS

*We have an extensive range of houses and flats,
most of which are available for immediate occupation.*

Landlords:

*If you have a property which you are considering letting, please contact us
for details of our services and to arrange an initial
free-of-charge inspection and valuation.*

*We also undertake the management of blocks of
owner-occupied flats.*

Tel: 01704 500388 (24hr service)

Fax: 017040 539099

*Office hours: Monday to Friday: 9.00am to 5.15pm
Saturday: 9.30am to 4.00pm
Sunday: by appointment*



Talisman Advertising Gifts

**Calendars, Diaries, Pens, Key Fobs,
Stickers, Executive Gifts,
Consultance Service**

18a Lyndhurst Road, Southport PR8 4JT
Telephone: 01704 567119

0% APR

**UP TO 24 MONTHS
FINANCE AVAILABLE**



THE BICYCLE LOUNGE

www.thebicyclelounge.co.uk
46-48 Moor Street Ormskirk L39 2AQ
01695 577240



All your requirements for
**Domestic, Commercial
and Industrial Premises**

*A local company specialising
in the supply of security locks
and access control equipment
throughout the North West*

Locks supplied and fitted to Doors & Windows



- Keys cut to pattern • Keys cut to code •
- Master keyed suites of locks •
- Electronic and mechanical access control systems •
- Automatic door operators supplied and fitted •

Southport

01704 545400

Preston

01772 804044

Email: sales@masterlockandsafe.com
www.masterlockandsafe.com

**Master Lock
& Safe**

HEAD OFFICE 23 SOUTHBANK ROAD SOUTHPORT PR8 6QJ

Delph Dive Centre Cafe Bar

Hallspenny Lane, Off Bannister Lane,
Eccleston, Nr. Chorley PR7 5PR

Hot
Food

Toasties

Jacket
Potatoes

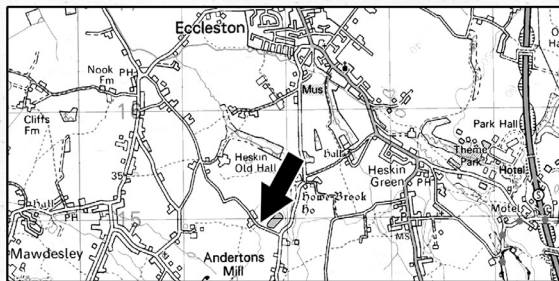
Sandwiches

Hot
Drinks

Cold
Drinks

Huntley
Farm
Ice
Cream

**ALL THE BIKERS
FAVOURITES...
BEANS,
POACHED EGG,
TIFFIN CAKE, ETC.**



PADI DIVING COURSES AVAILABLE ANYTIME

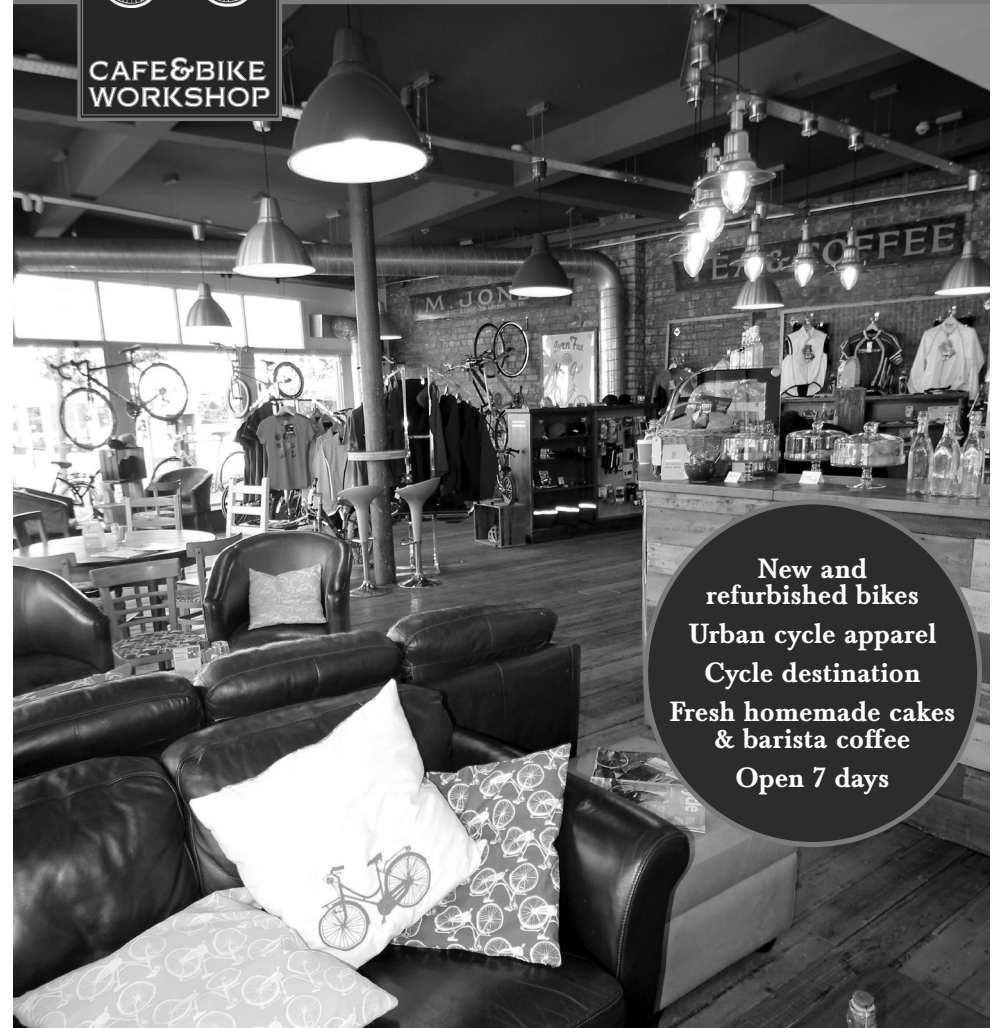
Web:- www.thedelph.co.uk Email:- delphdi.shaw@btconnect.com
Telephone 01257 450663 Fax 01257 451860
Mobile 07850 325781

MECYCLE



CAFE & BIKE
WORKSHOP

MeCycle is a social enterprise cycle shop
& café that promotes cycling and offers
work placements to adults with autism



New and
refurbished bikes
Urban cycle apparel
Cycle destination
Fresh homemade cakes
& barista coffee
Open 7 days

MeCycle Café & Bike Workshop, 59 Station Road,
Ainsdale, Southport PR8 3HH

Tel: 01704 579353 Email: emailus@mecycle.co.uk

Follow us on and

Autism Ventures
real partnerships, unique solutions, positive outcomes.

Registered Charity Number: 1137068

argyle FINANCIAL GROUP

independent financial advisers

understanding finance

Head Office:

Farthings, Little Gaddesden, Berkhamsted, Herts. HP4 1PE
Tel: 0845 604 6285

Mallorca Wheels

Pay pack & go cycling holidays



Hotel Janeiro 3 star
31 euros Dinner B&B
1-2 or 3 weeks



Any dates in May 2015 and October 2015
Mrs A Clayton, 31 Croft Hill, Sutton-in-Craven BD20 7PL
E-Mail AudreyClayton@hotmail.com

Airport pick up and drop off
Bike hire arranged We can book flights

R.T Rendering & Plastering

12 Pitt Street, Southport

E-Mail Russell.thaw@hotmail.co.uk

Tel 01704 227658 Mobile 07808 481234

- Commercial and Domestic Plastering
- Skimming, Dry Lining, Coving • Floor Screeding
- Rendering • Alpine, Tyrolean & Pebble Dash
- Damp Proofing and Wall Ties • Insurance Backed Guarantees

NORTH WEST Youth League

I would like to thank you all for your support for the continuation of the North West Youth League. With rounds of the Youth League taking place at six different North West closed circuit venues, I'm pleased to report that the North West Youth League is in a strong position to go forward in 2015.

North West League 2015	Venue	Club	Contact	Day	Date
North West Youth League Round 1	Salt Ayre Cycle Circuit -Lancaster	Salt Ayre Cog Set	Sue Holden	Saturday	11/04/2015
North West Youth League Round 2	Litherland Cycle Circuit - Liverpool	Liverpool Century	Ian Kendall	Saturday	16/05/2015
North West Youth League Round 3	Steven Burke Sports Hub - Colne	Cycle Sport Pendle	Martin Woffindin	Saturday	27/06/2015
North West Youth League Round 4	Palatine Cycle Circuit - Blackpool	Palatine Circuit	Tom Leivers	Saturday	18/07/2015
North West Youth League Round 5	Tameside Cycle Circuit - Manchester	Tameside CDG	Joe Malik/Fred Hewitt	Saturday	TBC
North West Youth League Round 6	Victoria Park - Southport	Southport CC	Ken Beck	Saturday	26/09/2015

The entry fee for 2015 will be as follows:

Youth A/B/C - £10.00 Youth D/E - £8.00
£2.00 will be added to entries on the day

- Please enter online at www.britishcycling.org.uk
- Entries will close Sunday before each event or you can enter on the day if any race has not got a full field
- 10 am start for all events, please sign on by 9:30am
- Two races per day
- Ideal racers for beginners and experienced riders
- A Presentation will be held at Southport Cycling Club after the final round

Entries online at britishcycling.org



Email info@mrpiggy.net Telephone 07894 537533

WWW.MRPIGGY.NET



Primrose Hill Nurseries
Asmall Lane
Ormskirk
L40 8JL

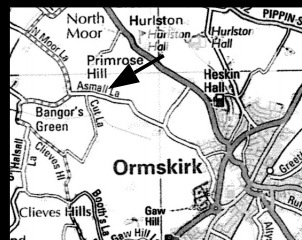
Only 5 mins from town centre

01704 841121

Newly opened and set within our Garden Centre our Cafe is open 7 days a week.

From the finest freshly roasted coffee to All Day Breakfasts to delicious hand baked cakes we also offer a selection of freshly prepared light lunches Afternoon Tea for 2 only £5.95
2pm - 4.30pm (tea/coffee and scone/ cake each)

*Visit Now
for a warm
welcome and
great food!*



Southport Cycling Club
presents

**The British Cycling North West Region
Closed Circuit Race Championships**

For boys & girls (girls have their own races)

Saturday 25th April 2015 at 11.00am

Entries £10 to: Ken Beck, 18 Melrose Ave., Southport PR9 9UY

No entries on the day

The event is sponsored by Impact Security Solutions, Ormskirk and Highonbikes.com

Under 16 boys race for the Robert McBride Memorial Trophy

Enter online at BritishCycling.org



Merseyside Cycling Development Group

PRESS RELEASE

The MCDG Committee are very pleased to announce that Terry Dolan of Dolan Bikes Ltd will Sponsor for the years 2014, 2015 and 2016 three of the Star Trophy Competitions which were first started in 1973. Yes, three competitions, the usual Senior and Junior Competitions Plus for the first time a Youth A riders Competition



All competitions are open to competitors of members only of affiliated clubs/teams in the Merseyside Area of the British Cycling North West.

In addition, to make it more interesting competitors in these competitions are limited to a maximum of their six best positions in the listed qualifying events for their category of competition in this series each year.

The rules for each of the competitions are available on the MCDG website:

<http://www.merseysidecyclingdevelopment.org/> Regular updates on the competitions will be issued and will be shown on the MCDG website.

Series Coordinator: Tom Greep, 19, Foxhill Close, Liverpool L8 8LA

Mobile: 07753 840241 Email Address: tom@tgrep.fsnet.co.uk

The Qualifying Events for this competition are:

Date	Day	Race Cat.	Promoting Club	Name of Event	Points Category
14.03.15.	Sat	Yth A	Southport CC	Terry Dolan Youth Circuit Races Round 1 - Victoria Park	A
21.03.15.	Sat	Yth A	Southport CC	Terry Dolan Youth Circuit Races Round 2 - Victoria Park	A
28.03.15.	Sat	Yth A	Southport CC	Terry Dolan Youth Circuit Races Round 3 - Victoria Park	A
11.04.15.	Sat	Yth A	Salt Ayre Cog Set	BC North West Youth League Round 1 - Salt Ayre	A
15.04.15.	Wed	Yth A	Litherland Circuit League	Litherland Circuit League Round 2	A
25.04.15.	Sat	Yth A	Southport CC	BC North West Youth Championships - Victoria Park	B
29.04.15.	Wed	Yth A	Litherland Circuit League	Litherland Circuit League Round 4	A
02.05.15.	Sat	Yth A	Isle of Man Cycling Association	Sleepwell Hotels Isle of Man Youth Tour - 2014 - Stage 2	B
03.05.15.	Sun	Yth A	Isle of Man Cycling Association	Sleepwell Hotels Isle of Man Youth Tour - 2014 - Stage 3	B
16.05.15.	Sat	Yth A	Liverpool Century RC	BC North West Youth League Round 2 - Litherland	A
20.05.15.	Wed	Yth A	Litherland Circuit League	Litherland Circuit League Round 7	A
09.06.15.	Tues	Yth A	Tameside Cycling Development League	Tameside Cycling Development Group League: Round 9	A
TBC	Sat	Yth A	Tameside Cycle Circuit Venue	BC North West Youth League Round 3	A
05.07.15.	Sun	Yth A	Steven Burke Sports Hub Venue	BC North West Youth League Round 4 - Nelson	A
15.07.15.	Wed	Yth A	Litherland Circuit League	Litherland Circuit League Round 15	A
18.07.15.	Sat	Yth A	Palatine Cycle Circuit Venue	BC North West Youth League Round 5 - Blackpool	A
19.08.15.	Wed	Yth A	Litherland Circuit League	Litherland Circuit League Round 20	A
26.09.15.	Wed	Yth A	Southport CC	BC North West Youth League Round 6 - Victoria Park	A

When organisers run more than one race for this category of rider for their day's promotion the longest distance scratch race only will be the qualifying event for this series

Points/Placing:	Points	1st	2nd	3rd	4th	5th	6 th
	A	3	2	1	1		
	B	6	5	4	3	2	1

DTC - Date to be confirmed

Regular Points updates are shown on

[\(http://merseysidecyclingdevelopment.org/\)](http://merseysidecyclingdevelopment.org/)

Series Coordinator: T. E. Greep, 19, Foxhill Close, Liverpool, L8 8LA

Mobile: 07753 840241

Email Address is: tom@tgrep.fsnet.co.uk